



6. Place a **WHOLE NOTE** on the staff for each letter name given. **LOOK AT THE CLEF SIGN!** (5)

D F E G B

7. Place a **WHOLE NOTE** on the staff for each letter name given. **LOOK AT THE CLEF SIGN!** (5)

A C E G B

8. Circle the correct music sign for each name given. (12)

A. Bass Clef			D. Measure		
B. Half Note			E. Time Signature		
C. Whole Rest			F. Double Bar Line		

9. Draw the note named below the measure. You may use any line or space on the staff, but you must **REMEMBER THE STEM RULE!** (6)

Half Note

Quarter Note

Whole Note

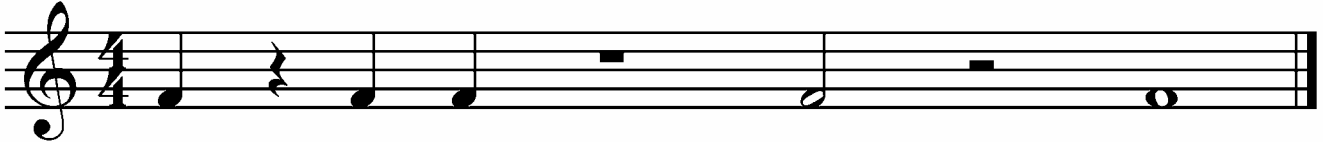
10. Write the number of beats each note or rest gets in $\frac{4}{4}$ time. (12)

	= _____ beat(s)		= _____ beat(s)
	= _____ beat(s)		= _____ beat(s)
	= _____ beat(s)		= _____ beat(s)

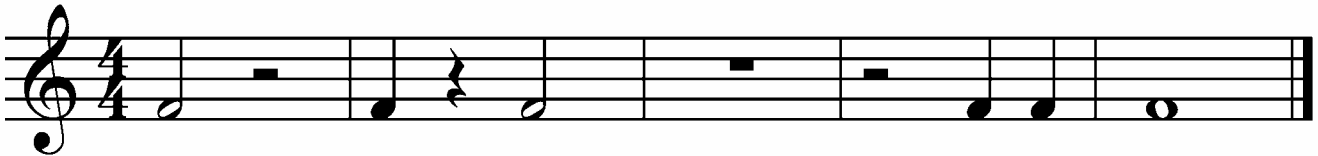


Name _____
(print name)

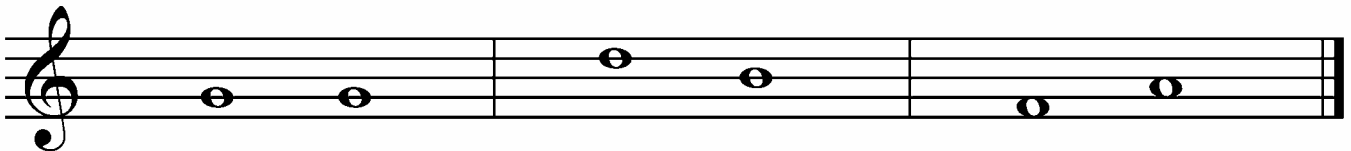
11. Place the **BAR LINES** where they are needed on the staff below. (6)
 → **LOOK AT THE TIME SIGNATURE!**



12. Write the counts below each note and each rest. Example: 1-2 3 4 or 1-2 1 1 (5)
 → **LOOK AT THE TIME SIGNATURE!**

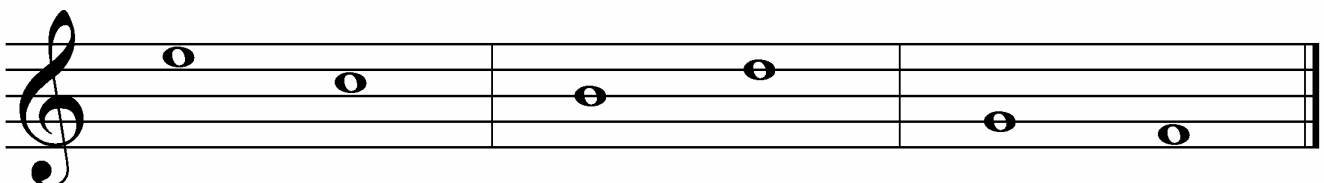


13. The second note of each group moves either **UP**, **DOWN**, or stays the **SAME**. **CIRCLE** the correct word for each group. (3)



- | | | |
|-------------|-------------|-------------|
| UP | UP | UP |
| DOWN | DOWN | DOWN |
| SAME | SAME | SAME |

14. Each group moves as a **STEP** or a **SKIP**. **CIRCLE** the correct word for each group. (3)



- | | | |
|-------------|-------------|-------------|
| STEP | STEP | STEP |
| SKIP | SKIP | SKIP |



15. The teacher will play five different notes (one at a time) on the piano. (5)
If the note sounds **HIGH**, circle the word **HIGH**. If the note sounds **LOW**, circle the word **LOW**.

1.	2.	3.	4.	5.
HIGH	HIGH	HIGH	HIGH	HIGH
LOW	LOW	LOW	LOW	LOW

16. The teacher will play five groups of notes. These notes will move **UP** or **DOWN**. (5)

If the notes move **UP**, circle the word **UP**. If the notes move **DOWN**, circle the word **DOWN**.

1.	2.	3.	4.	5.
UP	UP	UP	UP	UP
DOWN	DOWN	DOWN	DOWN	DOWN

17. The teacher will play groups of two notes each. (5)

If the two notes you hear sound the **SAME**, circle the word **SAME**.
If the two notes you hear sound **DIFFERENT**, circle the word **DIFFERENT**.

1.	2.	3.	4.	5.
SAME	SAME	SAME	SAME	SAME
DIFFERENT	DIFFERENT	DIFFERENT	DIFFERENT	DIFFERENT

BONUS QUESTION

On the hands below, write the correct finger number on each finger. (1)

