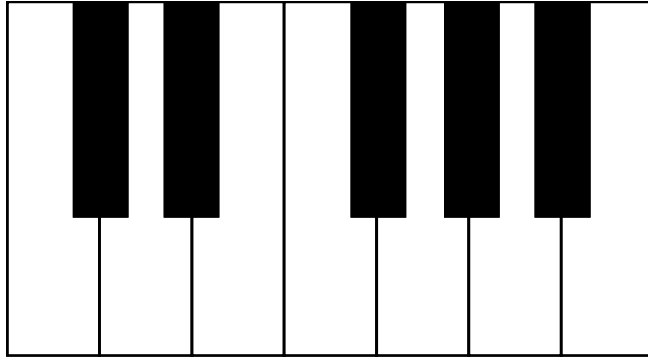




Texas Music Teachers Association
STUDENT AFFILIATE THEORY TEST

Name _____ School Grade _____ Date _____
(Print name.)

1. Print the names of all the white keys on the picture of the keyboard below. (7)



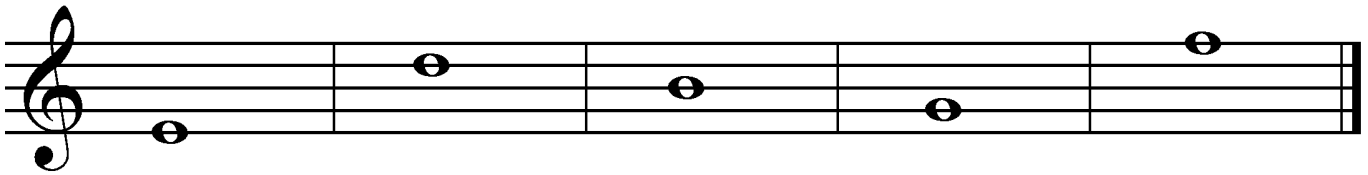
2. Write the music alphabet letters going up. The letter A is already printed for you. (6)

A _____

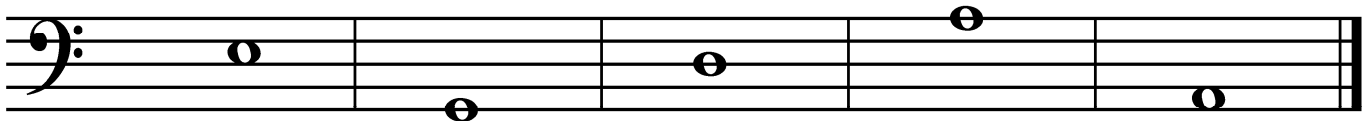
3. Fill in the blanks: (5)

A staff has _____ lines and _____ spaces.

4. Print the letter name of these notes on the line below each note. **LOOK AT THE CLEF SIGN!** (5)



5. Print the letter name of these notes on the line below each note. **LOOK AT THE CLEF SIGN!** (5)





6. Place a **WHOLE NOTE** on the staff for each letter name given. **LOOK AT THE CLEF SIGN!** (5)

A F C G E

7. Place a **WHOLE NOTE** on the staff for each letter name given. **LOOK AT THE CLEF SIGN!** (5)

A E F D G

8. Circle the correct music sign for each name given. (12)

A. Treble Clef			D. Measure		
B. Whole Note			E. Half note		
C. Quarter Rest			F. Double Bar Line		

9. Draw the note named below the measure. You may use any line or space on the staff, but you must **REMEMBER THE STEM RULE!** (6)

Half Note

Whole Note

Quarter Note

10. Write the number of beats each note or rest gets in $\frac{4}{4}$ time. (12)

	=	_____	beat(s)		=	_____	beat(s)
	=	_____	beat(s)		=	_____	beat(s)
	=	_____	beat(s)		=	_____	beat(s)



15. The teacher will play five different notes (one at a time) on the piano. (5)
If the note sounds **HIGH**, circle the word **HIGH**. If the note sounds **LOW**, circle the word **LOW**.

1.	2.	3.	4.	5.
HIGH	HIGH	HIGH	HIGH	HIGH
LOW	LOW	LOW	LOW	LOW

16. The teacher will play five groups of notes. These notes will move **UP** or **DOWN**. (5)

If the notes move **UP**, circle the word **UP**. If the notes move **DOWN**, circle the word **DOWN**.

1.	2.	3.	4.	5.
UP	UP	UP	UP	UP
DOWN	DOWN	DOWN	DOWN	DOWN

17. The teacher will play groups of two notes each. (5)

If the two notes you hear sound the **SAME**, circle the word **SAME**.
If the two notes you hear sound **DIFFERENT**, circle the word **DIFFERENT**.

1.	2.	3.	4.	5.
SAME	SAME	SAME	SAME	SAME
DIFFERENT	DIFFERENT	DIFFERENT	DIFFERENT	DIFFERENT

BONUS QUESTION

On the hands below, write the correct finger number on each finger. (1)

