

TEXAS MUSIC TEACHERS ASSOCIATION
Student Affiliate World of Music Quiz

Grade 1
2012-2013

Identity
Symbol

Name _____ School grade _____ Date _____

CIRCLE THE CORRECT ANSWER

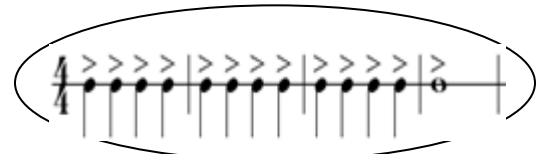
46

- Intervals measure the distance from one note to another (**beat** or **note**).
- The snare drum is a (**string** or **percussion**) instrument.
- The clarinet is a (**string** or **woodwind**) instrument.
- A sign that means silence is called a (**rest** or **bar line**).
- Rhythm makes (**sounds** or **animals**) move in a steady beat.
- A sharp (#) in front of a note means to play the very next note (**higher** or **lower**).
- The conductor (**plays instruments in** or **is the leader of**) the orchestra.
- The (**chromatic scale** or **major scale**) is made of half steps.
- “On Top of Old Smoky” and “Yankee Doodle” are (**folk songs** or **symphonies**).
- Boys and girls (**sing** or **play instruments**) in the choir.
- Notes which move up from Middle C are written on the (**treble** or **bass**) staff.
- Haydn lived in (**a house** or **Esterhazy castle**) where he wrote, taught, played and conducted many kinds of music for a prince.
- Schumann’s book of pieces for boys and girls is called *Album for the* (**Young** or **Old People**).
- Boys and girls play instruments in the (**choir** or **band**).
- The violin is a (**string** or **percussion**) instrument.
- Robert Schumann composed a piece called the (“**Happy Peddler**” or “**Happy Farmer**”).
- A triad is made of (**four** or **three**) notes.
- There are (**five** or **four**) groups of instruments in a symphony orchestra.
- A grand staff is made of a treble clef and a bass clef held together by a (**stem** or **brace**).
- Bach was a great (**dancer** or **organist**) and choir conductor.
- Mozart played the (**organ** or **harpsichord**) for kings and queens.
- The symbols for rhythm tell us which notes are the (**loudest** or **longest**).
- Papa Haydn conducted the (**Toy Story** or **Toy Symphony**) with his regular musicians and invited children to play.

40

CIRCLE THE CORRECT ANSWER

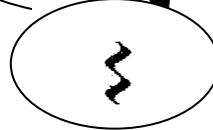
1. ACCENTED NOTES



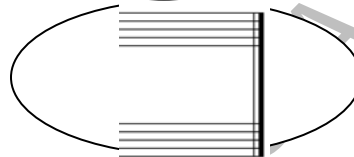
2. BAND MEMBER



3. QUARTER REST



4. DOUBLE BAR LINE



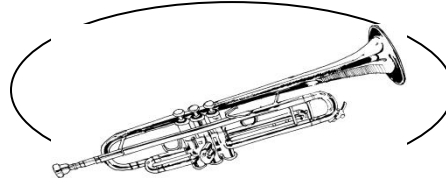
5. JOHANN SEBASTIAN BACH



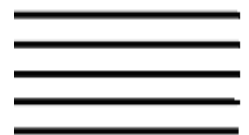
6. TRIAD



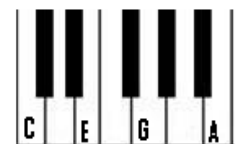
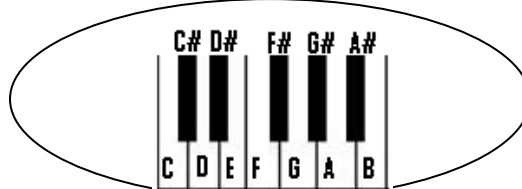
7. BRASS INSTRUMENT



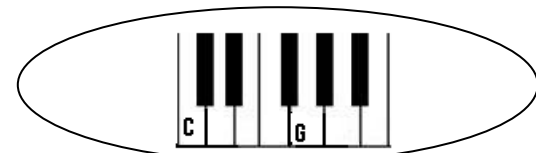
8. GRAND STAFF



9. HALF STEPS



10. FIFTH (5th)



CIRCLE THE CORRECT ANSWER

11. PLAY WITH (circle below):



a. RIGHT HAND

b. LEFT HAND

12. SHARP

13. QUARTER NOTE

14. WOODWIND INSTRUMENT

15. HARPSICHORD

16. HOW MANY MEASURES?
(Circle): 4 or 7?

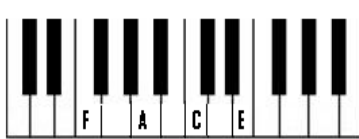
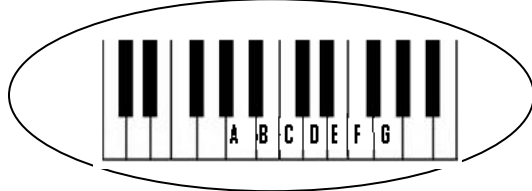
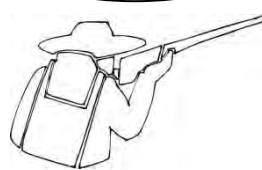
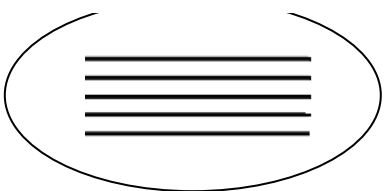
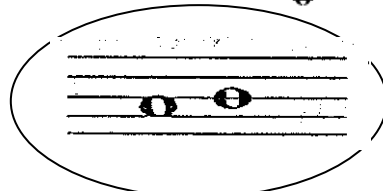
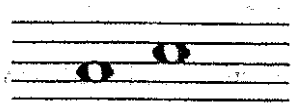
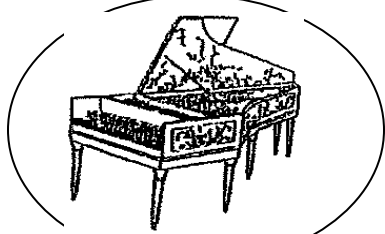
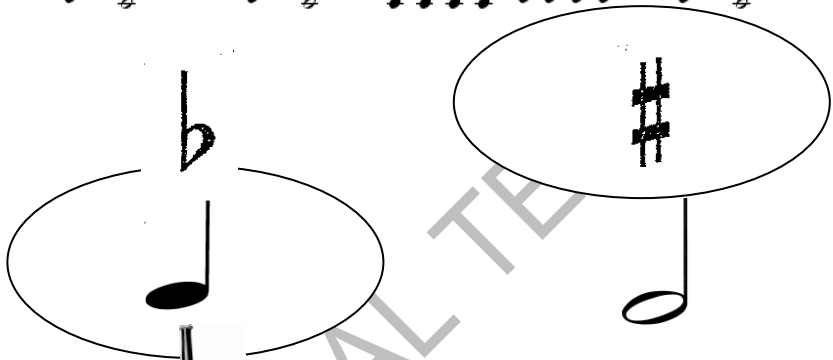


17. SECOND (2nd)

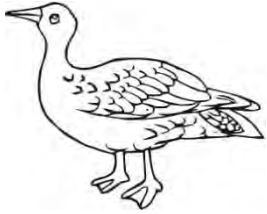
18. STAFF

19. CONDUCTOR

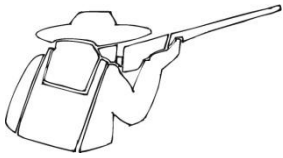
20. MUSICAL ALPHABET



14 PLACE THE NUMBER OF THE CORRECT INSTRUMENT IN THE BLANK BESIDE THE CHARACTER FROM PETER AND THE WOLF.



5 _____



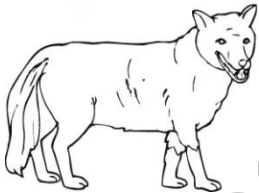
7 _____



3 _____



2 _____



1 _____



6 _____



4 _____

2.



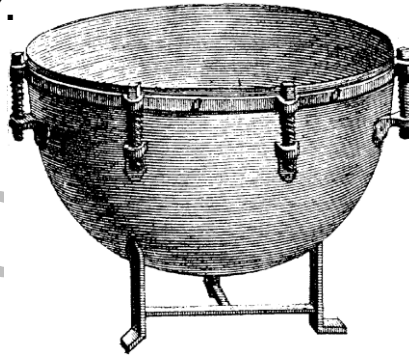
1.



6.



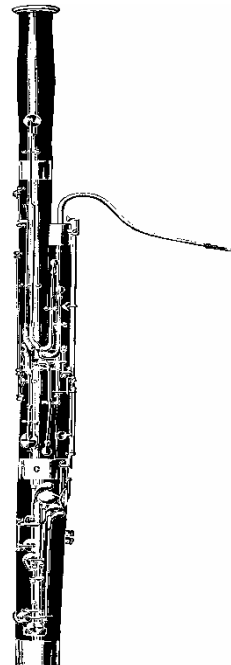
7.



3.



4.



5.

