

TEXAS MUSIC TEACHERS ASSOCIATION  
Student Affiliate World of Music Quiz

Grade 3  
2012-2013

Identity  
Symbol

Name \_\_\_\_\_ School grade \_\_\_\_\_ Date \_\_\_\_\_

**CIRCLE THE CORRECT ANSWER**

60

1. A pipe organ's sound is produced by forcing wind through the (pedals or pipes).
2. The United States has had many folk songs which are made up by (unknown or famous) people.
3. Bach, Handel, and Scarlatti were composers in the (Baroque or Contemporary) Era.
4. In *Peter and the Wolf*, Peter is represented by the (strings or bassoon).
5. Peer visits a sheik's palace in Arabia where the sheik's (daughter or mother) dances for him.
6. The major scale pattern, WWHWWWH, (cannot or can) be built on any key.
7. Grieg lived in (Norway or Austria).
8. The four eras in music history are (Antique or Romantic), Classical, Baroque and Contemporary.
9. The half steps of a major scale always come between notes 3-4 and (7-8 or 1-2).
10. Edvard Grieg lived during the (Romantic or Baroque) Era.
11. In *Peter and the Wolf*, the duck is represented by the (saxophone or oboe).
12. The primary triads of any key are triads that are built on notes (1, 4 and 5 or 1, 5 and 6) of the scale.
13. Humperdinck's sister, Adelheid, prepared the (libretto or music) for *Hansel and Gretel*.
14. In "In the Hall of the Mountain King", Peer is in a dark cave with bad (trolls or lions).
15. Grieg first wrote *Peer Gynt Suite* for symphony orchestra and later for (piano or oboe).
16. (Chopin or Prokofiev) wrote *Peter and the Wolf*.
17. "Looby Loo" and "I've Been Working on the Railroad" are examples of (ballets or folk songs).
18. Peer is a (foolish and bold or shy and smart) young fellow.
19. In *Peter and the Wolf*, the characters are represented by (singers or instruments).
20. Phrases are parts of complete (melodies or paragraphs).
21. Operas use (composers or singers) and a chorus of singers.
22. *Hansel and Gretel* was composed from a (Disney movie or Grimm Brothers fairy tale).
23. Bach and Handel wrote great pieces for the (marimba or organ) in the Baroque Era.
24. Conductors set the tempo and keep all the musicians on the (stage or beat).
25. Humperdinck lived during the (Classical or Romantic) Era.

CIRCLE THE CORRECT ANSWER

- 26. A repeating pattern in the bass is called (a motive or **an ostinato**).
- 27. Opera is a (**small-scale** or **large-scale**) musical production.
- 28. In the piece "Ase's Death", we learn that Peer's (**brother** or **mother**) dies.
- 29. Engelbert Humperdinck composed the opera (**Fox and Hound** or **Hansel and Gretel**).
- 30. A suite is a group of (**books** or **pieces**).

40

CIRCLE THE CORRECT ANSWER

1. This picture is from

- A. **HANSEL AND GRETEL**
- B. PEER GYNT SUITE



2. This person is a

- A. **CONDUCTOR**
- C. DANCER

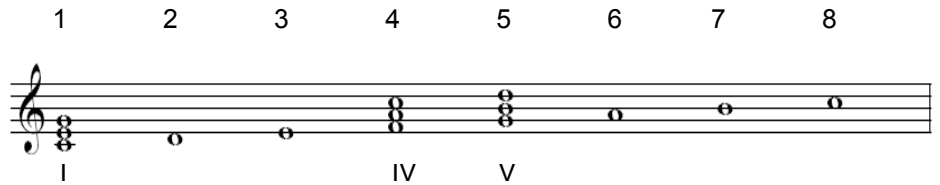


3. This whole tone scale uses (**ONLY WHOLE STEPS**) or **ONLY HALF STEPS**).



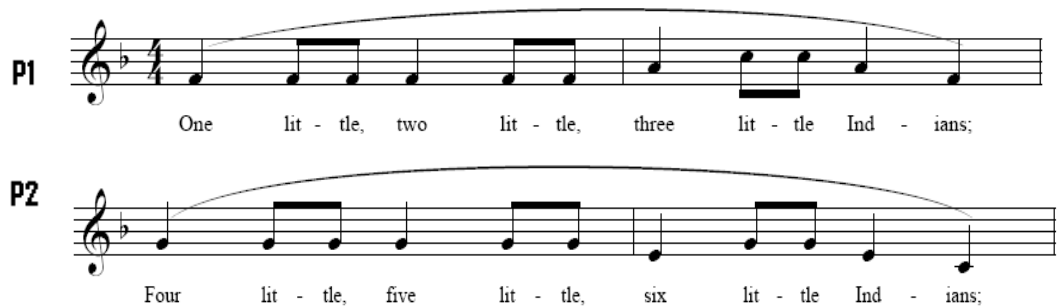
4. The triads based on certain notes of the scales are called:

- A. **PRIMARY TRIADS**
- B. SECONDARY TRIADS



5. Phrase 2 has the same intervals and rhythm, but different pitches. This is a

- A. REPETITION
- B. SEQUENCE**



6. These words set to opera music are called

A. MOTIVES

B. LIBRETTO



7. This instrument, clarinet, is a

A. BRASS instrument

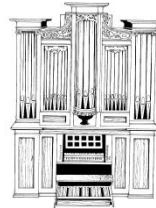
B. WOODWIND instrument



8. This instrument is

A. A CELESTA

B. An ORGAN



9. This instrument, xylophone, is from the

A. PERCUSSION section

B. WOODWIND section



10. This instrument, violin, is from the

A. BRASS section of the orchestra

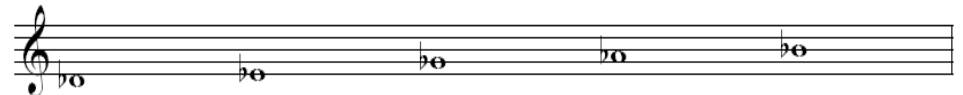
B. STRING section of the orchestra



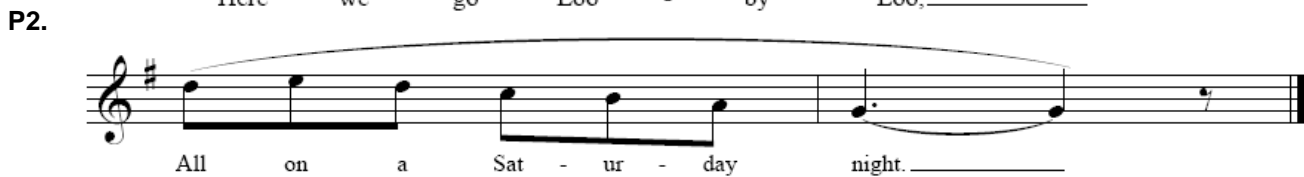
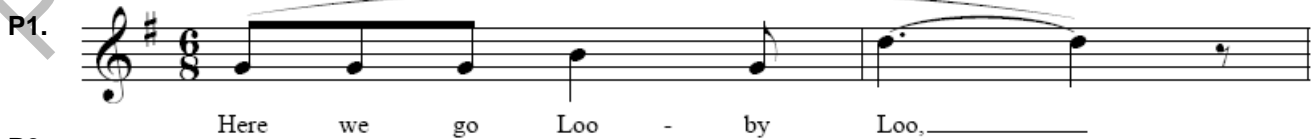
11. This five-tone scale uses only the black keys:

A. PENTATONIC SCALE

B. WHOLE SCALE



12. Phrase 1 = A. Phrase 2 = (B or A).



13. This instrument, tuba, is from the

- A. BRASS section of the orchestra  
 B. STRING section of the orchestra



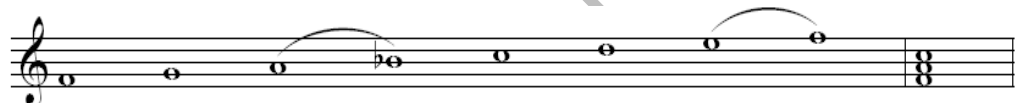
14. This picture is from

- A. PETER AND THE WOLF  
 B. PEER GYNT SUITE



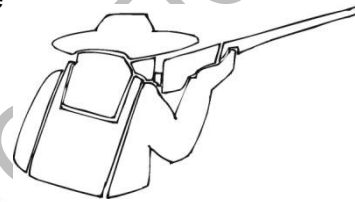
15. The triad in the second measure that begins on the first note of the scale is called the:

- A. DOMINANT TRIAD  
 B. TONIC TRIAD



16. In *Peter and the Wolf*, this person is represented by the

- A. STRINGS  
 B. DRUMS



17. In *Peter and the Wolf*, this character is represented by the

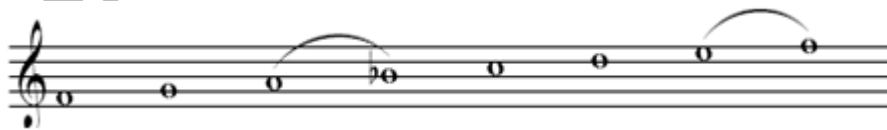
- A. TROMBONE  
 B. BASSOON



18. JOHANN SEBASTIAN BACH:



19. This scale is a (MINOR or MAJOR) scale.



20. This scale built of ONLY HALF STEPS is a

- A. CHROMATIC SCALE  
 B. WHOLE TONE SCALE

