

TEXAS MUSIC TEACHERS ASSOCIATION
Student Affiliate World of Music Quiz

Grade 3
2012-2013

Identity
Symbol

Name _____ School grade _____ Date _____

CIRCLE THE CORRECT ANSWER

60

1. A pipe organ's sound is produced by forcing wind through the (**pedals** or **pipes**).
2. The United States has had many folk songs which are made up by (**unknown** or **famous**) people.
3. Bach, Handel, and Scarlatti were composers in the (**Baroque** or **Contemporary**) Era.
4. In *Peter and the Wolf*, Peter is represented by the (**strings** or **bassoon**).
5. Peer visits a sheik's palace in Arabia where the sheik's (**daughter** or **mother**) dances for him.
6. The major scale pattern, WWHWWWH, (**cannot** or **can**) be built on any key.
7. Grieg lived in (**Norway** or **Austria**).
8. The four eras in music history are (**Antique** or **Romantic**), Classical, Baroque and Contemporary.
9. The half steps of a major scale always come between notes 3-4 and (**7-8** or **1-2**).
10. Edvard Grieg lived during the (**Romantic** or **Baroque**) Era.
11. In *Peter and the Wolf*, the duck is represented by the (**saxophone** or **oboe**).
12. The primary triads of any key are triads that are built on notes (**1, 4 and 5** or **1, 5 and 6**) of the scale.
13. Humperdinck's sister, Adelheid, prepared the (**libretto** or **music**) for *Hansel and Gretel*.
14. In "In the Hall of the Mountain King", Peer is in a dark cave with bad (**trolls** or **lions**).
15. Grieg first wrote *Peer Gynt Suite* for symphony orchestra and later for (**piano** or **oboe**).
16. (**Chopin** or **Prokofiev**) wrote *Peter and the Wolf*.
17. "Looby Loo" and "I've Been Working on the Railroad" are examples of (**ballets** or **folk songs**).
18. Peer is a (**foolish and bold** or **shy and smart**) young fellow.
19. In *Peter and the Wolf*, the characters are represented by (**singers** or **instruments**).
20. Phrases are parts of complete (**melodies** or **paragraphs**).
21. Operas use (**composers** or **singers**) and a chorus of singers.
22. *Hansel and Gretel* was composed from a (**Disney movie** or **Grimm Brothers fairy tale**).
23. Bach and Handel wrote great pieces for the (**marimba** or **organ**) in the Baroque Era.
24. Conductors set the tempo and keep all the musicians on the (**stage** or **beat**).
25. Humperdinck lived during the (**Classical** or **Romantic**) Era.

CIRCLE THE CORRECT ANSWER

- 26. A repeating pattern in the bass is called (**a motive** or **an ostinato**).
- 27. Opera is a (**small-scale** or **large-scale**) musical production.
- 28. In the piece "Ase's Death", we learn that Peer's (**brother** or **mother**) dies.
- 29. Engelbert Humperdinck composed the opera (**Fox and Hound** or **Hansel and Gretel**).
- 30. A suite is a group of (**books** or **pieces**).

40

CIRCLE THE CORRECT ANSWER

1. This picture is from

- A. HANSEL AND GRETEL
- B. PEER GYNT SUITE



2. This person is a

- A. CONDUCTOR
- C. DANCER

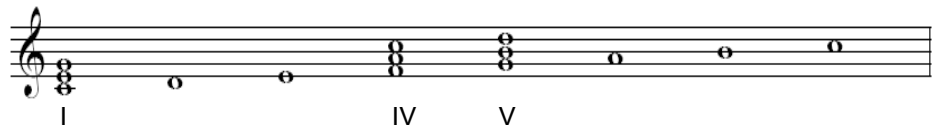


3. This whole tone scale uses (**ONLY WHOLE STEPS** or **ONLY HALF STEPS**).



4. The triads based on certain notes of the scales are called:

- A. PRIMARY TRIADS
- B. SECONDARY TRIADS



5. Phrase 2 has the same intervals and rhythm, but different pitches. This is a

- A. REPETITION
- B. SEQUENCE

P1

P2

6. These words set to opera music are called

- A. MOTIVES
- B. LIBRETTO



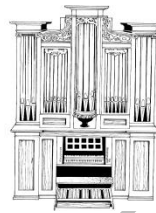
7. This instrument, clarinet, is a

- A. BRASS instrument
- B. WOODWIND instrument



8. This instrument is

- A. A CELESTA
- B. An ORGAN



9. This instrument, xylophone, is from the

- A. PERCUSSION section
- B. WOODWIND section



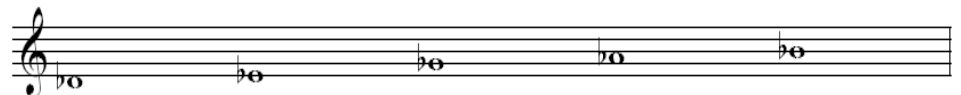
10. This instrument, violin, is from the

- A. BRASS section of the orchestra
- B. STRING section of the orchestra



11. This five-tone scale uses only the black keys:

- A. PENTATONIC SCALE
- B. WHOLE SCALE

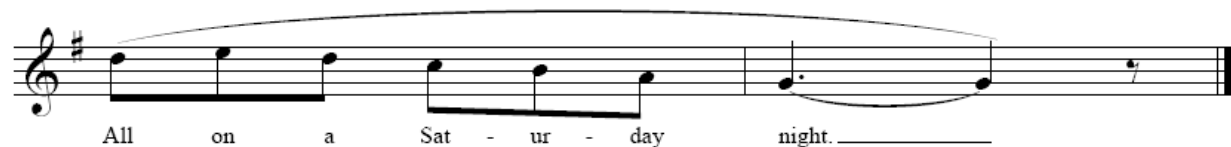


12. Phrase 1 = A. Phrase 2 = (B or A).

P1.



P2.



13. This instrument, tuba, is from the

- A. BRASS section of the orchestra
- B. STRING section of the orchestra



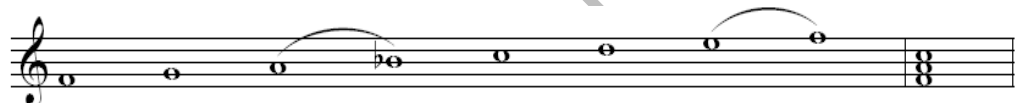
14. This picture is from

- A. *PETER AND THE WOLF*
- B. *PEER GYNT SUITE*



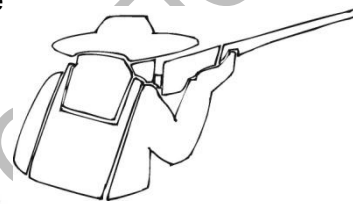
15. The triad in the second measure that begins on the first note of the scale is called the:

- A. DOMINANT TRIAD
- B. TONIC TRIAD



16. In *Peter and the Wolf*, this person is represented by the

- A. STRINGS
- B. DRUMS



17. In *Peter and the Wolf*, this character is represented by the

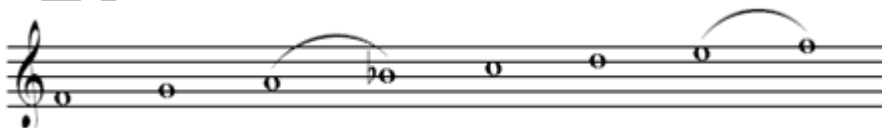
- A. TROMBONE
- B. BASSOON



18. JOHANN SEBASTIAN BACH:



19. This scale is a (**MINOR** or **MAJOR**) scale.



20. This scale built of ONLY HALF STEPS is a

- A. CHROMATIC SCALE
- B. WHOLE TONE SCALE

