

TEXAS MUSIC TEACHERS ASSOCIATION
Student Affiliate World of Music Quiz

Grade 1
2013-2014

Identity Symbol

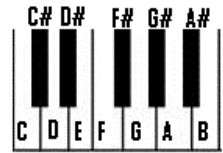
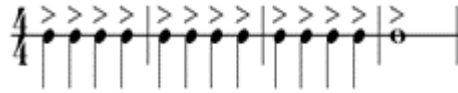
Name _____ School grade _____ Date _____

CIRCLE THE CORRECT ANSWER

46

1. Folk songs are songs sung by (**a few** or **many**) people.
2. "On Top of Old Smoky" and "Yankee Doodle" are (**folk songs** or **symphonies**).
3. A tuba is a (**woodwind** or **brass**) instrument.
4. Five lines and four spaces is called a (**staff** or **music alphabet**).
5. Boys and girls sing in (**choirs** or **orchestras**).
6. Boys and girls play (**tic-tac-toe** or **instruments**) in a band.
7. The grand staff is a treble and bass staff held together by (**middle C** or **a brace**).
8. There are (**five** or **seven**) letters in the music alphabet.
9. The music alphabet starts on (**C** or **A**).
10. A triad is made of (**five** or **three**) notes.
11. Notes which move up from Middle C are usually played with the (**left** or **right**) hand.
12. Rhythm makes (**bar lines** or **sounds**) move in a steady beat.
13. The symbols for rhythm tell us which notes are (**longest** or **loudest**).
14. Notes on the staff may step, skip, or (**repeat** or **fly**).
15. Every symphony has a leader called a (**performer** or **conductor**).
16. A composer who was called "Papa" by his musicians was (**Haydn** or **Schumann**).
17. A symphony orchestra consists of (**four** or **five**) groups of instruments.
18. A bass clef on a staff shows that the line between the dots is (**C** or **F**).
19. Haydn conducted a symphony that uses (**robot** or **toy**) instruments.
20. Bach was a great (**dancer** or **organist**) and choir conductor.
21. Mozart played the (**harpsichord** or **guitar**) for kings and queens.
22. Schumann's book of pieces for boys and girls is called *Album for the* (**Young** or **Old**).
23. Intervals measure the distance from one note to another (**note** or **rest**).

1. ACCENTED NOTES



2. CHOIR MEMBER



3. QUARTER REST



4. VIOLIN



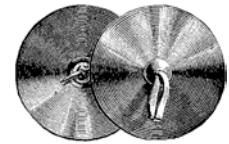
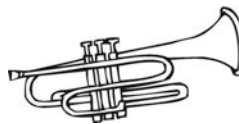
5. FRANZ JOSEPH HAYDN



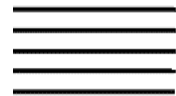
6. TRIAD



7. PERCUSSION INSTRUMENT



8. GRAND STAFF



9. HALF STEPS



10. FOURTH (4th)



PRACTICE - NO FINAL TEST

CIRCLE THE CORRECT ANSWER

11. LOWEST NOTE (circle below):

- a. "E"
- b. "C"



12. FLAT



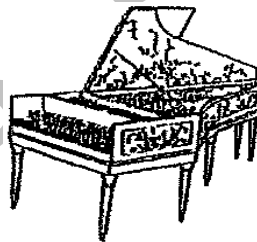
13. HALF NOTE



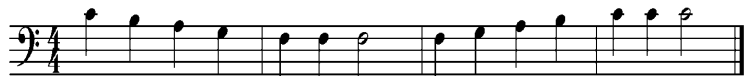
14. WOODWIND INSTRUMENT



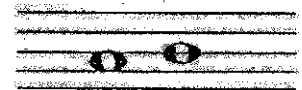
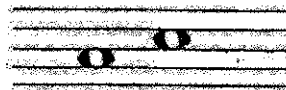
15. HARPSICHORD



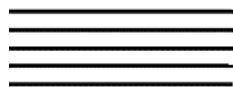
16. HOW MANY MEASURES?
(Circle): 4 or 7?



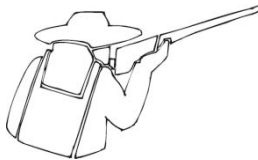
17. THIRD (3rd)



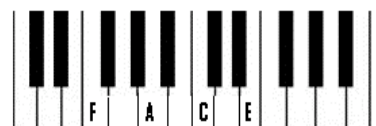
18. KEYBOARD



19. CONDUCTOR



20. MUSIC ALPHABET



14 PLACE THE NUMBER OF THE CORRECT INSTRUMENT IN THE BLANK BESIDE THE CHARACTER FROM PETER AND THE WOLF.

