

TEXAS MUSIC TEACHERS ASSOCIATION
Student Affiliate World of Music Quiz

Grade 3
2013-2014

Identity
Symbol

Name _____ School grade _____ Date _____

CIRCLE THE CORRECT ANSWER

60

1. Phrases are parts of complete (melodies or upbeats).
2. A large-scale musical production with costumes and scenery is (an opera or a suite).
3. A (major or minor) scale can be built on any key on the piano by using the pattern WWHWWWH.
4. Sad music will most likely be (fast or slow).
5. The United States has had many (folk or rap) songs which were made up by unknown people. An example is "Down in the Valley" and "I've Been Working on the Railroad."
6. In *Peter and the Wolf*, Peter is represented by the (flute or strings).
7. *Hansel and Gretel* was written by (Engelbert Humperdinck or Ludwig van Beethoven).
8. The four eras in music history are (Broken or Baroque), Classical, Romantic and Contemporary.
9. The half steps of a major scale always come between notes (3-4 or 5-6) and 7-8.
10. Edvard Grieg was from (Germany or Norway).
11. In *Peter and the Wolf*, the grandfather is represented by the (bassoon or oboe).
12. Conductors set the *tempo* and keep all the musicians they are conducting on the (beat or pitch).
13. Edward Grieg wrote *Peer Gynt Suite* during the (Classical or Romantic) Era.
14. In the song, "In the Hall of the Mountain King", Peer is in a dark (cave or valley) with bad trolls.
15. Grieg first wrote *Peer Gynt Suite* for (symphony orchestra or jazz band) and later for piano.
16. *Peter and the Wolf* was written by (Tchaikovsky or Prokofiev).
17. The trumpet, French horn, trombone, and tuba are (brass or percussion) instruments.
18. Peer is a (foolish and bold or shy and smart) young fellow.
19. In *Peter and the Wolf*, the (characters or conductors) are represented by instruments.
20. An *ostinato* is a repeating (treble or bass) pattern.
21. The whole tone scale is made up of only (whole notes or whole steps).
22. *Hansel and Gretel* was composed from a (Disney movie or Grimm Brothers fairy tale).
23. Bach wrote great pieces for the (marimba or organ) in the Baroque Era.
24. Peer goes to Arabia where a sheik's daughter (dances or sings) for him.
25. A pipe organ's sound is produced by forcing wind through (pipes or electronic connections).

CIRCLE THE CORRECT ANSWER

- 26. The conductor of a symphony orchestra always stands in the (front or back) of the orchestra on a podium.
- 27. Prokofiev was from the (Romantic or Contemporary) Era.
- 28. The four groups of instruments are: strings, brass, percussion, and (woodwinds or wooden).
- 29. In *Ase's Death* in the *Peer Gynt Suite*, we learn that Peer's (sister or mother) dies.
- 30. A suite is a group of (books or pieces)

40

CIRCLE THE CORRECT ANSWER

1. This picture is from

- A. HANSEL AND GRETEL
- B. PEER GYNT SUITE



2. This person is a

- A. CONDUCTOR
- B. SINGER



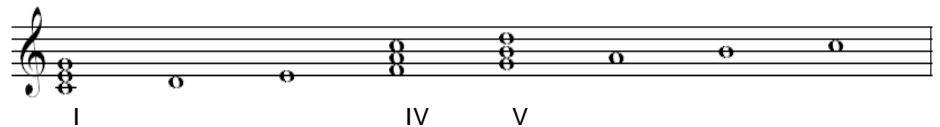
3. This whole tone scale uses (ONLY HALF STEPS or ONLY WHOLE STEPS).



4. The triads based on notes 1, 4 and 5 of the scale are called:

- A. PRIMARY TRIADS
- B. SECONDARY TRIADS

1 2 3 4 5 6 7 8



5. Phrase 2 has the same intervals, rhythm, and pitches. This is a

- A. REPETITION
- B. SEQUENCE

P1

P2

6. These words set to opera music are called

A. MOTIVES

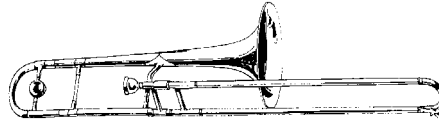
B. LIBRETTO



7. This instrument, the trombone, is a

A. PERCUSSION instrument

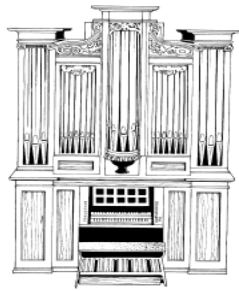
B. BRASS instrument



8. This instrument is

A. A CELESTA

B. An ORGAN



9. This instrument, the oboe, is from the

A. PERCUSSION section

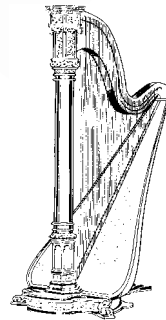
B. WOODWIND section



10. This instrument, the harp, is from the

A. BRASS section of the orchestra

B. STRING section of the orchestra



11. This five-tone scale uses only the black keys:

A. PENTATONIC SCALE

B. WHOLE SCALE



12. Phrase 1 = A. Phrase 2 = B or A. (Circle the correct letter.)

Phrase 1.

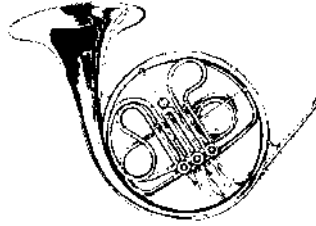


Phrase 2.



13. This instrument, the French horn, is from the

- A. BRASS section of the orchestra
 B. WOODWIND section of the orchestra



14. This picture is from

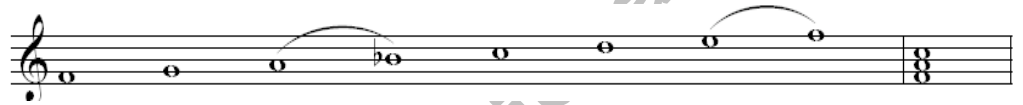
- A. *PETER AND THE WOLF*
 B. *PEER GYNT SUITE*



15. The triad in the second measure that begins on the first note of the scale and uses notes 1-3-5 is called the:

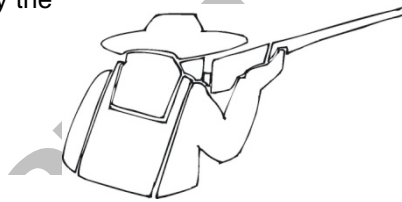
A. DOMINANT TRIAD

B. TONIC TRIAD



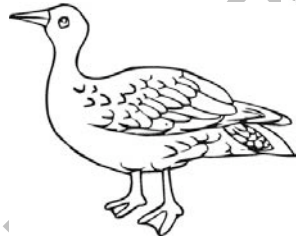
16. In *Peter and the Wolf*, this person is represented by the

- A. DRUMS
 B. WOODWINDS



17. In *Peter and the Wolf*, this character is represented by the

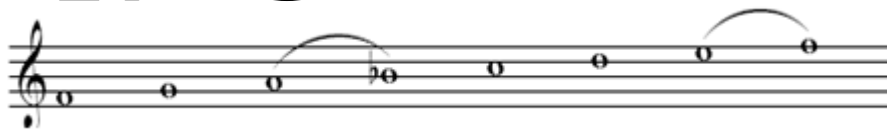
- A. OBOE
 B. BASSOON



18. Circle the picture of **LUDWIG VAN BEETHOVEN**:



19. This scale is a (**MAJOR** or MINOR) scale.



20. The scale built of ONLY HALF STEPS is a

A. WHOLE TONE SCALE

B. CHROMATIC SCALE

C# D# F# G# A#

