

TEXAS MUSIC TEACHERS ASSOCIATION  
Student Affiliate World of Music Quiz

Grade 3  
2013-2014

Identity  
Symbol

Name \_\_\_\_\_ School grade \_\_\_\_\_ Date \_\_\_\_\_

**CIRCLE THE CORRECT ANSWER**

60

1. Phrases are parts of complete (**melodies** or **upbeats**).
2. A large-scale musical production with costumes and scenery is (**an opera** or **a suite**).
3. A (**major** or **minor**) scale can be built on any key on the piano by using the pattern WWHWWWH.
4. Sad music will most likely be (**fast** or **slow**).
5. The United States has had many (**folk** or **rap**) songs which were made up by unknown people. An example is "Down in the Valley" and "I've Been Working on the Railroad."
6. In *Peter and the Wolf*, Peter is represented by the (**flute** or **strings**).
7. *Hansel and Gretel* was written by (**Engelbert Humperdinck** or **Ludwig van Beethoven**).
8. The four eras in music history are (**Broken** or **Baroque**), Classical, Romantic and Contemporary.
9. The half steps of a major scale always come between notes (**3-4** or **5-6**) and 7-8.
10. Edvard Grieg was from (**Germany** or **Norway**).
11. In *Peter and the Wolf*, the grandfather is represented by the (**bassoon** or **oboe**).
12. Conductors set the *tempo* and keep all the musicians they are conducting on the (**beat** or **pitch**).
13. Edward Grieg wrote *Peer Gynt Suite* during the (**Classical** or **Romantic**) Era.
14. In the song, "In the Hall of the Mountain King", Peer is in a dark (**cave** or **valley**) with bad trolls.
15. Grieg first wrote *Peer Gynt Suite* for (**symphony orchestra** or **jazz band**) and later for piano.
16. *Peter and the Wolf* was written by (**Tchaikovsky** or **Prokofiev**).
17. The trumpet, French horn, trombone, and tuba are (**brass** or **percussion**) instruments.
18. Peer is a (**foolish and bold** or **shy and smart**) young fellow.
19. In *Peter and the Wolf*, the (**characters** or **conductors**) are represented by instruments.
20. An *ostinato* is a repeating (**treble** or **bass**) pattern.
21. The whole tone scale is made up of only (**whole notes** or **whole steps**).
22. *Hansel and Gretel* was composed from a (**Disney movie** or **Grimm Brothers fairy tale**).
23. Bach wrote great pieces for the (**marimba** or **organ**) in the Baroque Era.
24. Peer goes to Arabia where a sheik's daughter (**dances** or **sings**) for him.
25. A pipe organ's sound is produced by forcing wind through (**pipes** or **electronic connections**).

CIRCLE THE CORRECT ANSWER

26. The conductor of a symphony orchestra always stands in the (**front** or **back**) of the orchestra on a podium.
27. Prokofiev was from the (**Romantic** or **Contemporary**) Era.
28. The four groups of instruments are: strings, brass, percussion, and (**woodwinds** or **wooden**).
29. In *Ase's Death* in the *Peer Gynt Suite*, we learn that Peer's (**sister** or **mother**) dies.
30. A suite is a group of (**books** or **pieces**).

40

CIRCLE THE CORRECT ANSWER

1. This picture is from

- A. *HANSEL AND GRETEL*
- B. *PEER GYNT SUITE*



2. This person is a

- A. CONDUCTOR
- B. SINGER

3. This whole tone scale uses (**ONLY HALF STEPS** or **ONLY WHOLE STEPS**).

4. The triads based on notes 1, 4 and 5 of the scale are called:

- A. PRIMARY TRIADS
- B. SECONDARY TRIADS



5. Phrase 2 has the same intervals, rhythm, and pitches. This is a

- A. REPETITION
- B. SEQUENCE

P1 

P2 

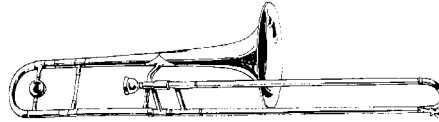
6. These words set to opera music are called

- A. MOTIVES
- B. LIBRETTO



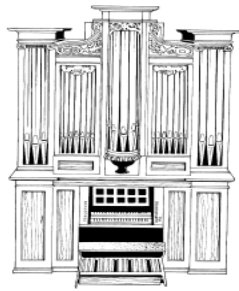
7. This instrument, the trombone, is a

- A. PERCUSSION instrument
- B. BRASS instrument



8. This instrument is

- A. A CELESTA
- B. An ORGAN



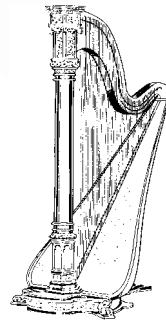
9. This instrument, the oboe, is from the

- A. PERCUSSION section
- B. WOODWIND section



10. This instrument, the harp, is from the

- A. BRASS section of the orchestra
- B. STRING section of the orchestra



11. This five-tone scale uses only the black keys:

- A. PENTATONIC SCALE
- B. WHOLE SCALE



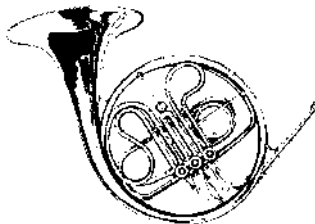
12. Phrase 1 = A. Does Phrase 2 = (B or A) ? (Circle the correct letter.)

Phrase 1. Here we go Loo - by Loo, \_\_\_\_\_

Phrase 2. All on a Sat - ur - day night. \_\_\_\_\_

13. This instrument, the French horn, is from the

- A. BRASS section of the orchestra
- B. WOODWIND section of the orchestra



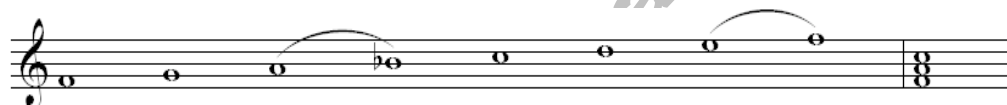
14. This picture is from

- A. PETER AND THE WOLF
- B. PEER GYNT SUITE



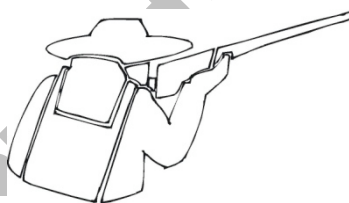
15. The triad in the second measure that begins on the first note of the scale and uses notes 1-3-5 is called the:

- A. DOMINANT TRIAD
- B. TONIC TRIAD



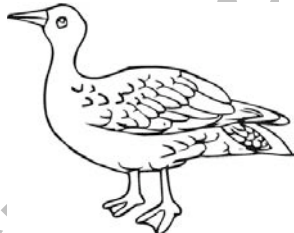
16. In *Peter and the Wolf*, this person is represented by the

- A. DRUMS
- B. WOODWINDS



17. In *Peter and the Wolf*, this character is represented by the

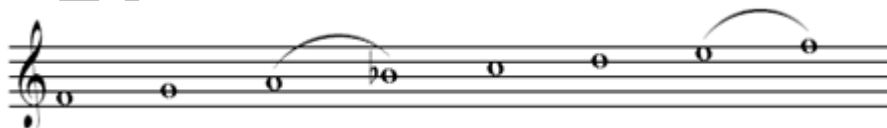
- A. OBOE
- B. BASSOON



18. Circle the picture of **LUDWIG VAN BEETHOVEN**:



19. This scale is a (**MAJOR** or **MINOR**) scale.



20. The scale built of **ONLY HALF STEPS** is a

- A. WHOLE TONE SCALE
- B. CHROMATIC SCALE

